

HOW TO COMICS

TASKBOARD®

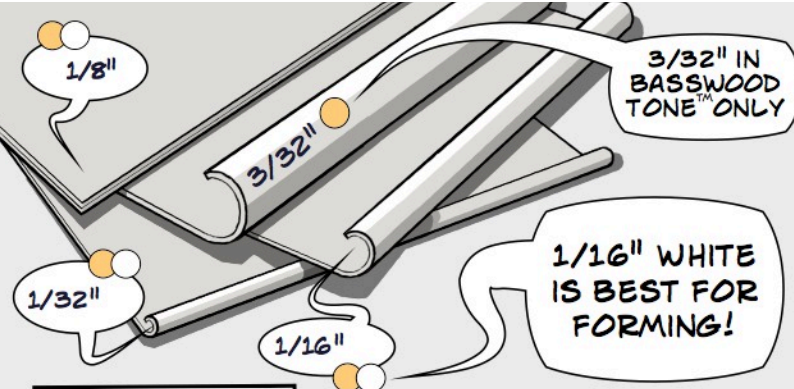
SUPER ECO FRIENDLY
SEE BELOW

proudly presents
episode #1 in the
adventures of :

SHAPE WITH WATER!



TASKBOARD IS MANUFACTURED UNDER THE STRICT STANDARDS DEFINED AT THE UN CONVENTION ON BIODIVERSITY: HARVESTING FROM MANAGED FORESTRY, REPLENISHING THE FOREST WHILE PROTECTING THE LOCAL BIOSPHERE



1/8 WILL NOT FORM AT ALL

○ WHITE ● BASSWOOD TONE™

1/16" WHITE IS BEST FOR FORMING!

3/32" IN BASSWOOD TONE™ ONLY



ARCHIVING POSSIBLE WITH PAPERSAFE®



USE ANY SPRAY PAINT - THREE LIGHT COATS AND ONLY THEN A FINAL ONE



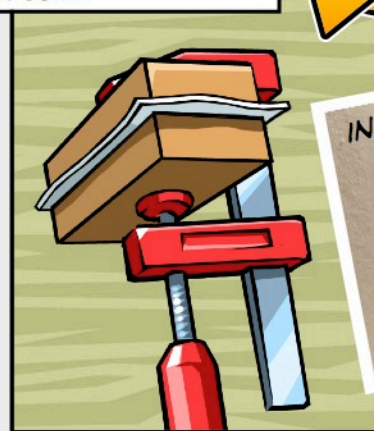
BURNISH WITH PIECE OF TASKBOARD FOR A SEMI-GLOSS FINISH



PAINT WITH ANY TYPE OF PAINT OVER A SPRAY-PAINT FINISH. MOST OBJECTS LOOK GREAT UNPAINTED TOO!

WET LIBERALLY AND APPLY PRESSURE UNTIL DRY. BASSWOOD TONE™ 3/32" BOARD IS BEST.

EMBOSS



INTRICATE DETAILS

GLUE DRIES SUPER FAST!



DETAILED VIDEO TIPS AND TRICKS

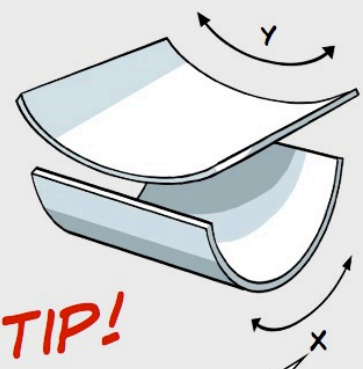
TASKBOARD CO.
7950 NW 53RD ST. #337
MIAMI FLORIDA 33166
1.800.401.0346
INFO@TASKBOARD.COM

COPYRIGHT 2012
PATENTS PENDING
ALL RIGHTS RESERVED

TASKBOARD.COM

SUPER ECO FRIENDLY

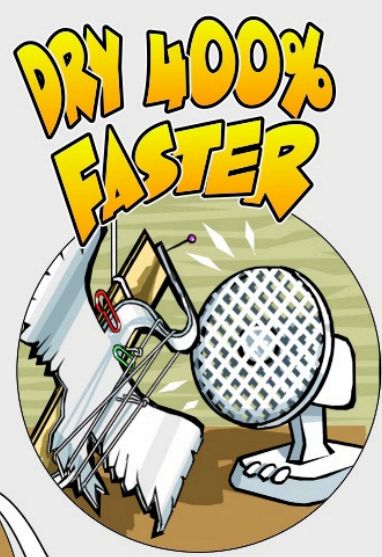
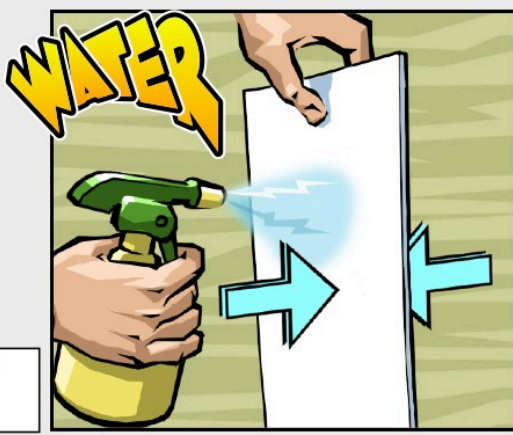
ONLINE STORE LOCATOR



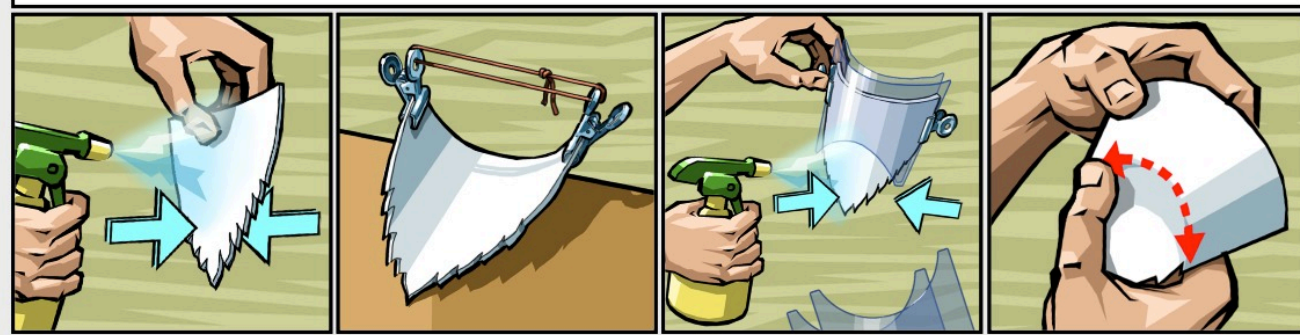
TIP!

X WILL FLEX MORE WHEN DRY AND FORMS TO TIGHTER

WET LIGHTLY & KNEAD GENTLY



THIS IS AN EXAMPLE OF FORMING IN MORE THAN ONE STEP AND USING MASKING TO SHAPE A SPECIFIC AREA



WHICHEVER WAY YOU CUT IT, LOW DENSITY MEANS EASY CUTTING AND THE ABILITY TO SAND MISTAKES!



ARCHITECTS! LIGHT SCORCH MARKS!

SAND FOR INVISIBLE JOINTS, BURNISH ANY WRINKLES OR DENTS BEFORE PAINTING, GLUE SEPARATED LAYERS, BUFFER PRESSURE OR REMOVE PRESSURE MARKS WITH SPRAY AND TAMPING.

